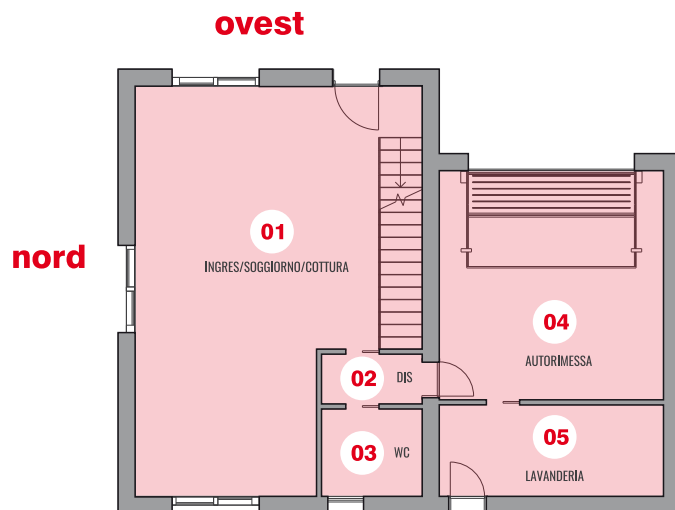


Bifamiliare A

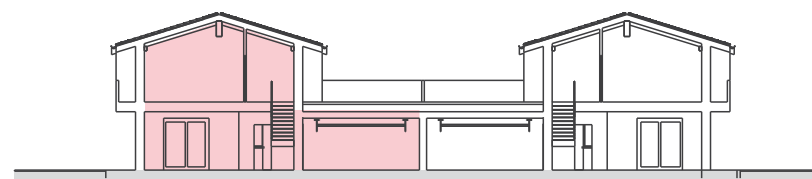
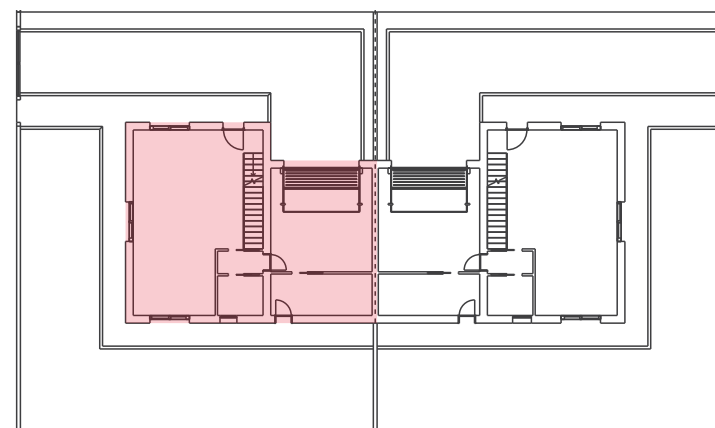


LEGENDA

01 INGRES/SOGGIORNO/COTTURA	mq 59,30
02 DISIMPEGNO	mq 02,90
03 BAGNO	mq 05,10
04 AUTORIMESSA	mq 29,80
05 LOCALE TECNICO	mq 11,90
06 DISIMPEGNO	mq 12,40
07 BAGNO	mq 07,80
08 POGGIOLO	mq 02,93
09 CAMERA	mq 13,30
10 CAMERA	mq 13,60
11 POGGIOLO	mq 07,70
12 CAMERA	mq 15,00
13 POGGIOLO	mq 02,93
14 BAGNO	mq 08,10
15 TERRAZZA	mq 49,75

SUP. COMMERCIALE	mq 184,06
GIARDINO ESCLUSIVO	mq 303,96

COLLOCAZIONE



PIANO TERRA e PRIMO

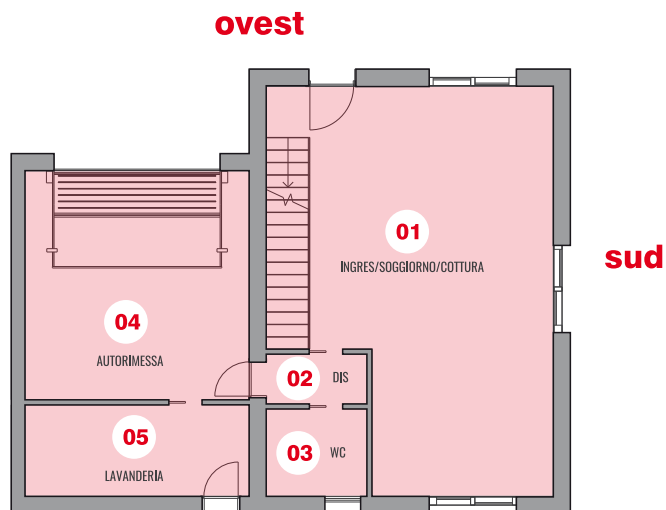
INDIRIZZO : VIA LISSARO, CAMPODORO



CLASSE ENERGETICA

UBICAZIONE

Bifamiliare B



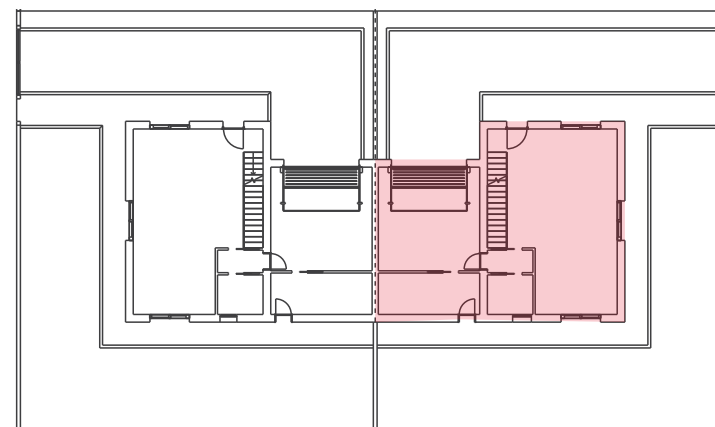
LEGENDA

01 INGRES/SOGGIORNO/COTTURA	mq 59,30
02 DISIMPEGNO	mq 02,90
03 BAGNO	mq 05,10
04 AUTORIMESSA	mq 29,80
05 LOCALE TECNICO	mq 11,90
06 DISIMPEGNO	mq 12,40
07 BAGNO	mq 07,80
08 POGGIOLO	mq 02,93
09 CAMERA	mq 13,30
10 CAMERA	mq 13,60
11 POGGIOLO	mq 07,70
12 CAMERA	mq 15,00
13 POGGIOLO	mq 02,93
14 BAGNO	mq 08,10
15 TERRAZZA	mq 49,75



SUP. COMMERCIALE	mq 184,06
GIARDINO ESCLUSIVO	mq 303,96

COLLOCAZIONE

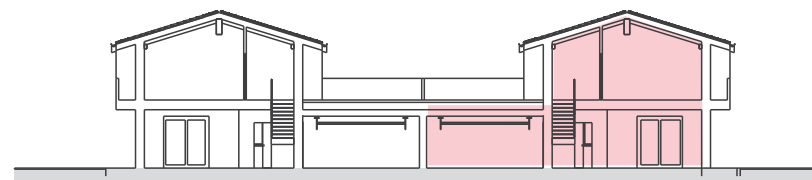


INDIRIZZO : VIA LISSARO, CAMPODORO



CLASSE ENERGETICA

UBICAZIONE



PIANO TERRA e PRIMO